

Wireless Touchpad for 30 Color RGB LED Controller

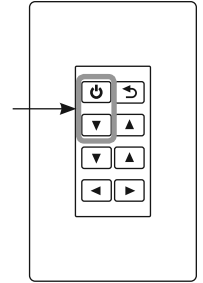
Model # RGB14REM

The Armcast Lighting Wireless Touchpad is for use only with Armcast Lighting's professional grade 30 Color RGB LED Controller (Model RGB8KEY-RF-WR) and 30 Color RGB Slimline Controller with Hand Held Remote (HHRGB14). It provides remote control of low voltage RGB LED lighting and works through walls and doors up to 100 ft. away. Using radio frequency (RF) technology, it eliminates the need to run wires from the RGB LED lighting to the wireless touchpad and is useful in projects where installing new cabling can be difficult.



- Features RF pairing technology for expandability and multi-zone lighting control. The wireless touchpad can be paired to control and synchronize multiple Armcast Lighting RGB controller receivers in the same area, or multiple touchpad/receiver sets can control different zones of lighting in the same area without cross interference.
- Includes designer-style wireless touchpad and all necessary mounting screws and drywall anchors. Also includes one 12V alkaline battery (27A).
- Units are for dry location only. If used outdoors, keep in a dry location. Wireless function may cease to operate properly in close-to-freezing temperatures.

- Restore power to the RGB receiver unit, within 2 seconds after restoring power, press and hold the power and brightness down keys simultaneously for about 2 seconds. This action will pair the two devices.



For model RGB8KEY-RF-WR the green signal light on the receiver will flash once to confirm successful pairing. For model HHRGB14, the LED tape light will quickly flash once when paired.

Common Code Pairing

It is possible to pair multiple receivers to the same single transmitter by simply repeating the steps above with additional receiver units.

Please note that only static colors will synchronize; color-changing effects will not synchronize due to the various cycling speeds of each unit. In addition, if you repeatedly press any of the touchpad keys too fast, the RGB controllers will lose their synchronization.

To re-synchronize, press the reset key on the touchpad transmitter. All receivers and RGB LED lighting will reset to the same warm white color. For effective synchronization, all receivers must be within range of the single wireless touchpad.



Each transmitter has a unique code that can be programmed or sent to additional receiver units so that all receivers now have the same transmitter code in common.

SET UP AND PAIRING

Your RGB color controller contains a radio frequency (RF) receiver that will need to be programmed or paired to recognize the frequency code of the wireless touchpad.



Model RGB8KEY-RF-WR

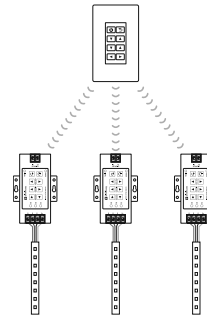
Model HHRGB14

The wireless touchpad only works with Armcast Lighting's 30 Color RGB LED controllers, models RGB8KEY-RF-WR and HHRGB14.

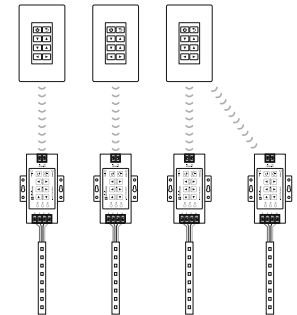
Be sure the battery in the transmitter is strong. In a darkened room, you should see a visible red LED light glowing through the front touchpad when you press any function key. If this glow is diminished or not visible, replace battery with a 12V 27A alkaline battery.

- Following the instructions that came with your color controller, connect the RGB color controller receiver to your power supply and RGB LED lights. Be sure your power supply is turned on. The red power indicator light will illuminate on model RGB8KEY. Model HHRGB14 does not have a power indicator light. Turn your LED lighting on and select any a static color using the mode key on the receiver. Model HHRGB14 will already be on a static color or use the hand held remote that was supplied with the unit.
- Shut off power to the receiver unit by unplugging the power supply – do not use the power OFF key on model RGB8KEY. Wait at least 5 seconds.

Common Code Pairing



Unique Code Pairing



Pairing and RF code technology can greatly reduce the need for extra wiring.

WIRELESS TOUCHPAD OPERATION

Power ON/OFF

BRIGHTNESS
Controls the light level for static colors and jump and strobe effects. Brightness is not adjustable in any color fade effects.

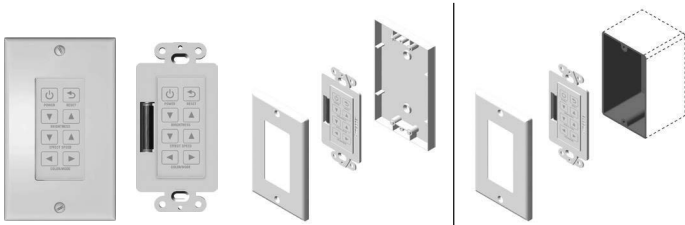
EFFECT SPEED
Controls the speed of all color-changing effects. Arrow up for faster, down for slower.

RESET key will take unit to the #1 sequence warm white color. At the same time, it will return brightness settings on all colors to 100%. Effect speeds will return to the medium speed setting.

COLOR/MODE
Press forward arrow to advance to next static color or color-changing effect. Press back arrow to return to previous color or effect displayed.

WIRELESS TOUCHPAD TRANSMITTER INSTALLATION

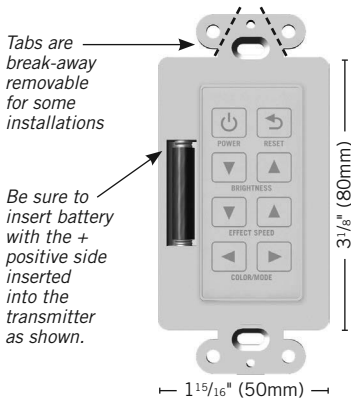
Designer-style wireless touchpad transmitter can easily be surface mounted or installed in-wall. It comes with a switch plate, mounting screws and drywall anchors. Also included is one 12V alkaline battery (27A). The touchpad design will blend with existing residential and commercial switches and dimming décor.



Standard designer-style switch plate and screws included.

Easily mount to any wall or flat surface (screws and anchors included).

Or install in standard electrical box, single or multiple gang formats.*



Tabs are break-away removable for some installations

Be sure to insert battery with the + positive side inserted into the transmitter as shown.

*When installing in-wall in a new cutout, recommend using Carlon® shallow plastic electrical box with mounting ears, part number B108R-UPC, sold separately.

Transmitter will not fit smaller electrical boxes. Please see dimensions and choose an appropriate box size. Some installations may require the removal of tabs as shown, simply break away with wire cutters. Note: Compatible with some, but not all, switch plates made by other manufacturers.

SPECIAL FEATURES, COLORS AND EFFECTS

Memory and Reset Function Key

The unit will remember the settings for brightness and speed for each color and each effect. For instance, if one color is dimmed, the unit will maintain that setting for that color until changed, even if the power is turned off.

If your power goes out, when it is restored, the unit will go to your last color or effects setting.

The wireless touchpad is designed with a unique reset function key. Pressing the reset key will take the RGB controller to the #1 sequence position which is a very warm white color. At the same time, it will automatically return the brightness settings on all colors to 100% full brightness and any programmed effect speeds will return to the medium speed setting.

Colors and effects

Pressing the reset key will take you to the #1 static color position which is a very warm white color. All colors are arranged in common color groupings for easy navigation, colors are fully dimmable.

1-5	Shades of white	31	White strobe
6-12	Shades of blue	32	Full color cross fade
13-17	Shades of green	33	Red, white and green cross fade
18-21	Shades of yellow	34	Red, white and blue cross fade
22-26	Shades of red	35	Red and white cross fade
27-30	Shades of purple	36	Red, gold and green cross fade

TROUBLESHOOTING

LED tape light strip does not light, flickers, or there is limited or inconsistent colors.

Make sure the power supply and RGB color controller are turned on and receiving power. Confirm you have maintained correct polarity on all wire connections (V+, red to red, green to green, blue to blue) when joining RGB LED strips as well as when connecting wires to the RGB color controller and to the power supply.

Press the reset key. If any other color appears other than a warm/yellow white, then you have a bad connection or polarity is not correct. Check to be sure all connections are secure. If you have a failed connector, you can easily solder wires to the LED tape and solder splice connections. Soldering is the surest method for making extra reliable electrical connections. Never use connectors in RV or boat applications due to possible vehicle vibrations. To learn about best soldering practices visit armacostlighting.com/installation.

The wireless touchpad is not working.

Be sure the touchpad is in range of your receiver. Try moving the touchpad closer to the receiver. The transmitter is a radio frequency (RF) device and, as such, the range of the wireless remote control is dependent on many factors. Actual operational distance will vary based on walls and line of sight obstructions, and other nearby electronic devices.

Be sure your battery is good. To check battery, press the on/off key in a dark room/location. When pressed, you should see a red LED indicator light glowing from behind the surface of the touchpad. If you do not see this glowing red light, replace the battery (Alkaline 27A 12V). A battery will last from 6 months up to 2 years, depending on usage.

The receiver may need to be paired again with your transmitter. If your dimmer receiver is functioning properly, and you know your transmitter battery is fresh, yet the transmitter will not control your lighting, please revisit the pairing instructions.

Static colors display uneven brightness or a color shift.

This may be due to voltage drop. Shorten the length of your RGB lighting installation or reduce the length of RGB power wire and/or use thicker wires. Refer to your RibbonFlex Pro specific model's Installation Guidelines for options on other installation configurations that may reduce voltage drop.

For help with larger LED lighting installations, email support@armacostlighting.com.

SPECIFICATIONS

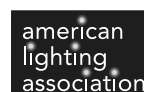
Working temperature.....	40 to 130°F (4 to 55°C)
Wireless working frequency.....	433.92Mhz
Transmitter battery.....	Alkaline 27A 12V
FCC ID	NWKHF10008
Country of origin.....	China

Limited 1-year warranty. This product is for dry location use only. Improper installation, improper powering, abuse, or failure to use this device for its intended purpose will void warranty. Proof of purchase is required for all returns. Questions? Email support@armacostlighting.com.



This item is a Radio Frequency Device (RF), and as such the range of the remote control is dependent on many factors. Actual operational distance will vary based on walls and line of sight obstructions, and other nearby electronic devices.

This device complies with Part 15 of the FCC Rules. Operation is subject to the following two conditions: (1) this device may not cause harmful interference, and (2) this device must accept any interference received, including interference that may cause undesired operation. Changes or modifications to this unit not expressly approved by the party responsible for compliance could void the user authority to operate the equipment.



© 2012-14 Armacost Lighting. All rights reserved.
140 Baltic Avenue, Baltimore, MD 21225

REV 06.14